

شركة ناس للخدمات البحرية ذ.م.م.  
**NASS MARINE SERVICES CO W.L.L.**

# Nass Marine Services

## Total Marine Solutions



Established in 2006, Nass Marine Services Co. W.L.L. is specialised in the building of small to medium sized vessels, ship repairs, and the application of new technologies.

The Nass Marine team operates out of a technologically advanced marine facility, have extensive experience gained in major shipbuilding and ship repairs worldwide with qualifications that are certified by reputed classification societies such as the American Bureau of Shipping.

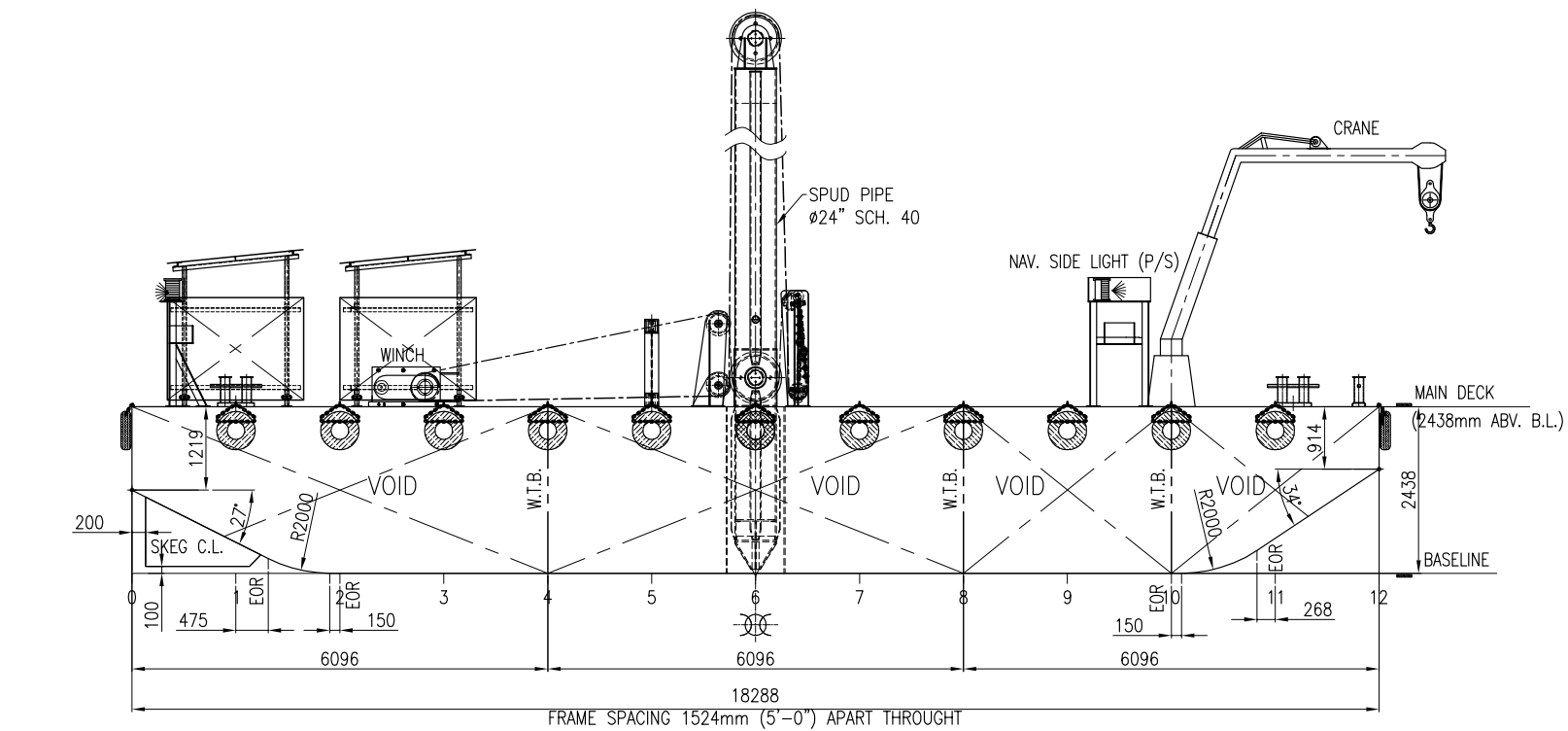
Nass Marine has the organisational

infrastructure to deliver projects on time and within budget. The Company's skilled workforce of 400 craft-men can produce 18 barges a year and the 520 - 700 ton capacity Marine Jetty for Mooring and Repairs allows Nass Marine to build and deliver units of up to 70 m in length. Nass Marine can also deliver upgrades and repairs that are engineered for maximum utility, within customers' time frame, budget and operating environment. The in-house design office can provide standard design projects, as well as tailor made constructions that can meet any client specifications.

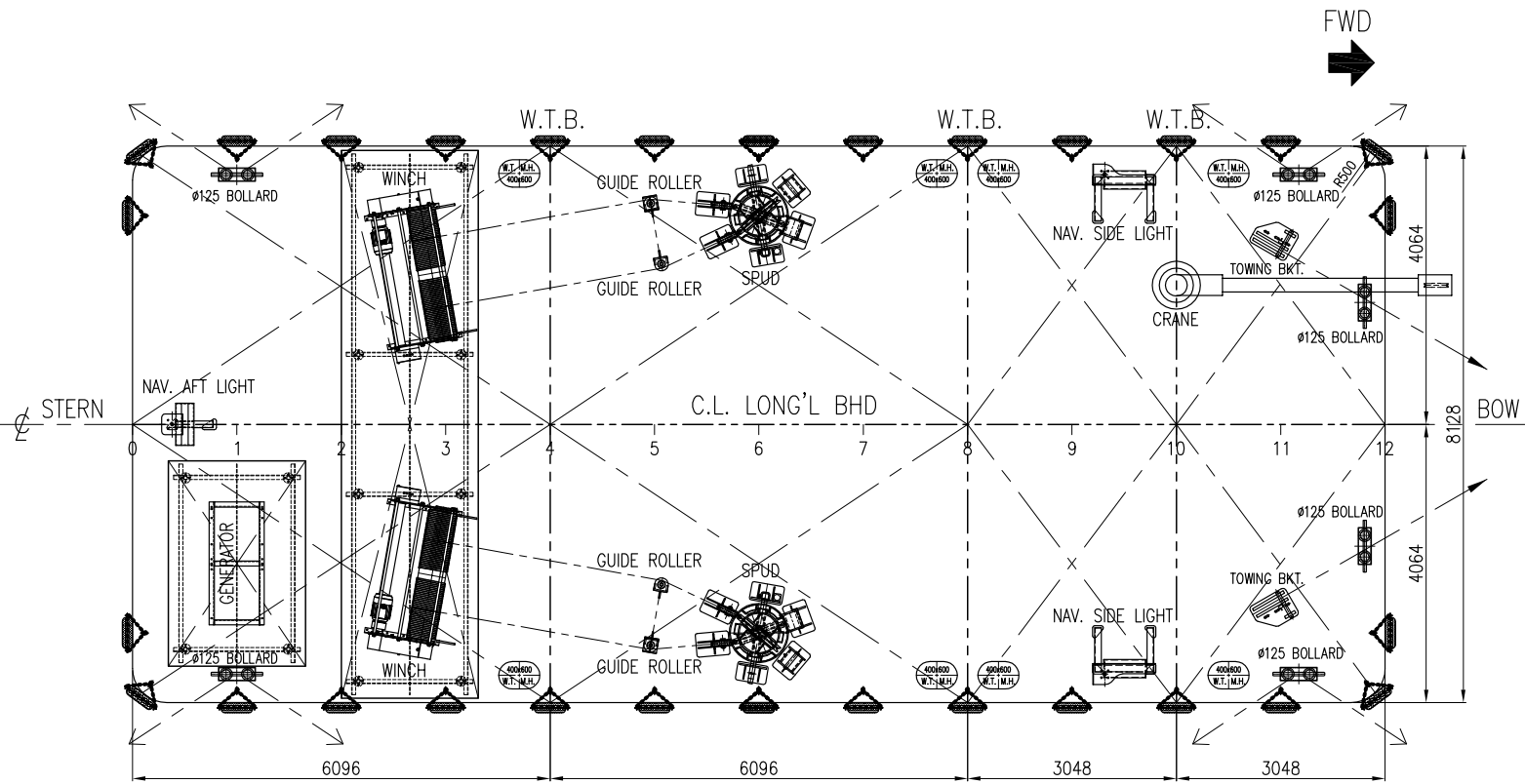


Total Marine Solutions

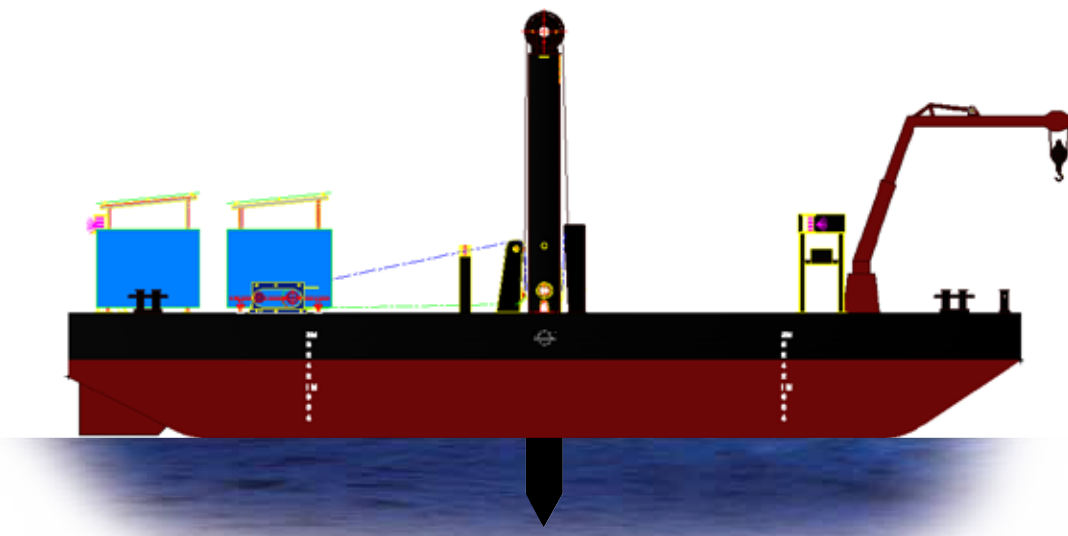
شركة ناس للخدمات البحرية ذ.م.م.  
NASS MARINE SERVICES CO W.L.L.



OUTBOARD PROFILE

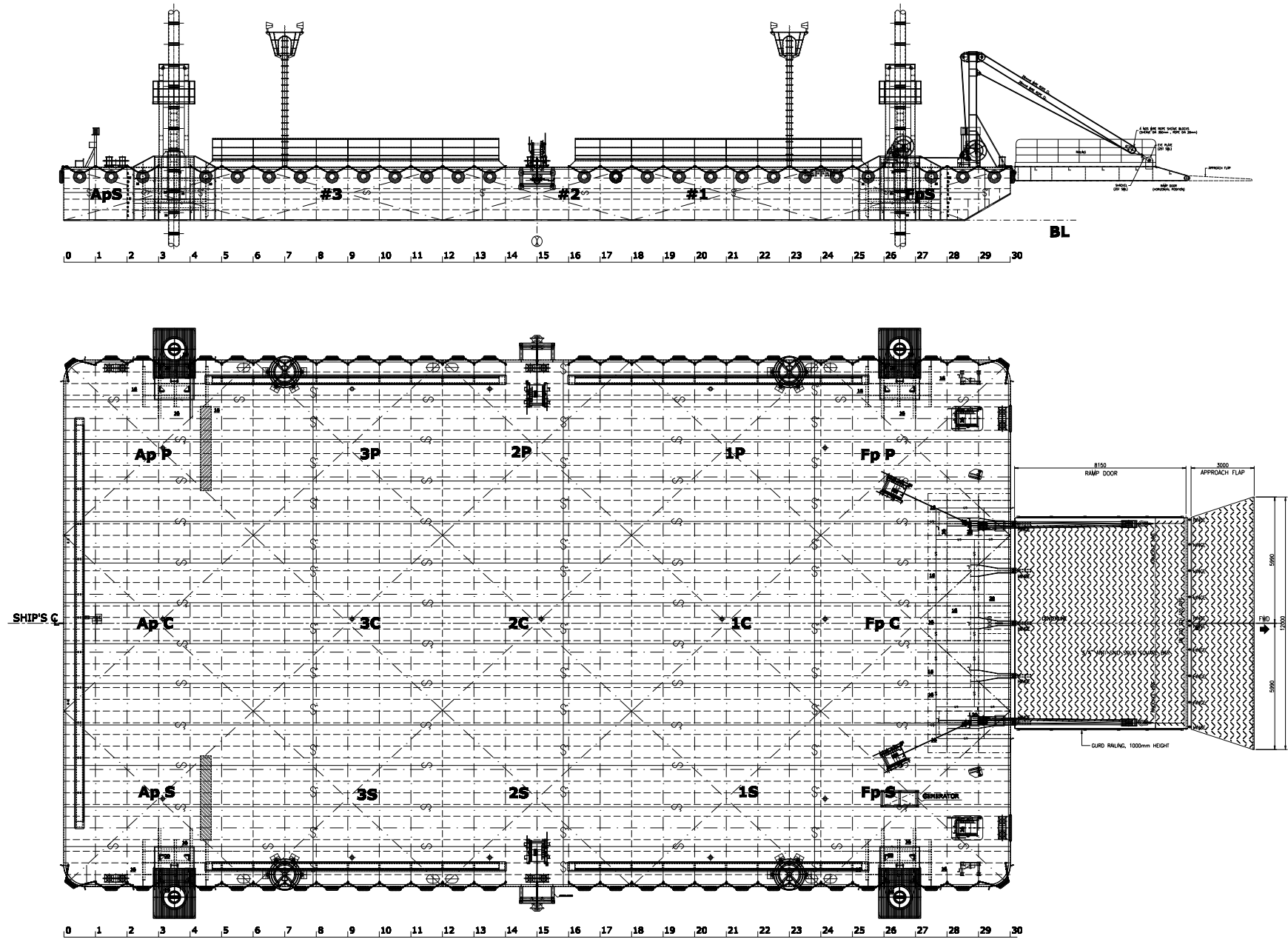


MAIN DECK ARRANGEMENT PLAN



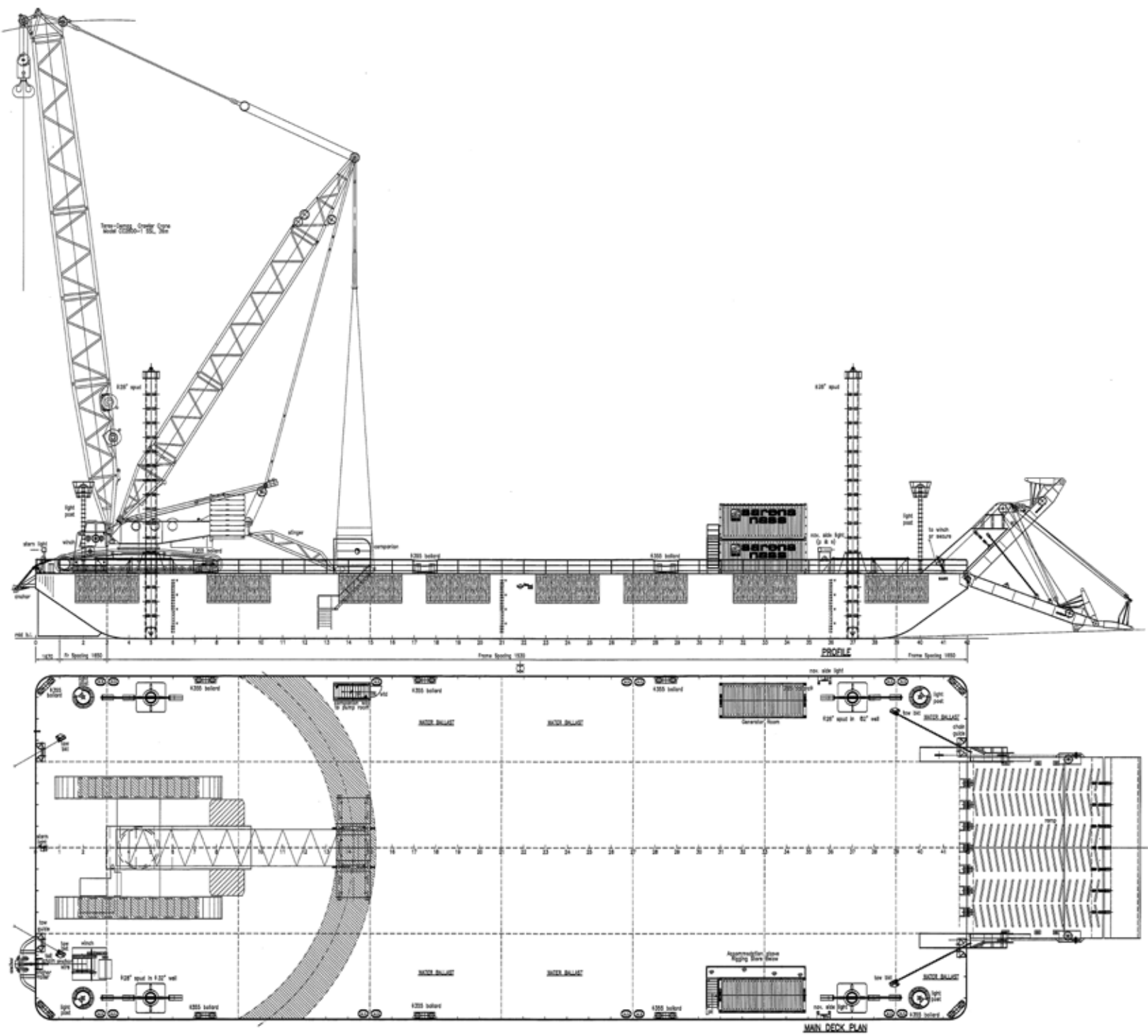
PRINCIPAL PARTICULARS

- LENGTH (MLD) 18.288 M (60.0 FT)
- BREADTH (MLD) 8.128 M (26.67 FT)
- DEPTH (MLD) 2.438 M (8.0 FT)
- DECK LOAD: 10 T/ M<sup>2</sup>
- CLASS: ABS + A1 BARGE
- 60' × 26.67' × 8' DECK CARGO BARGE



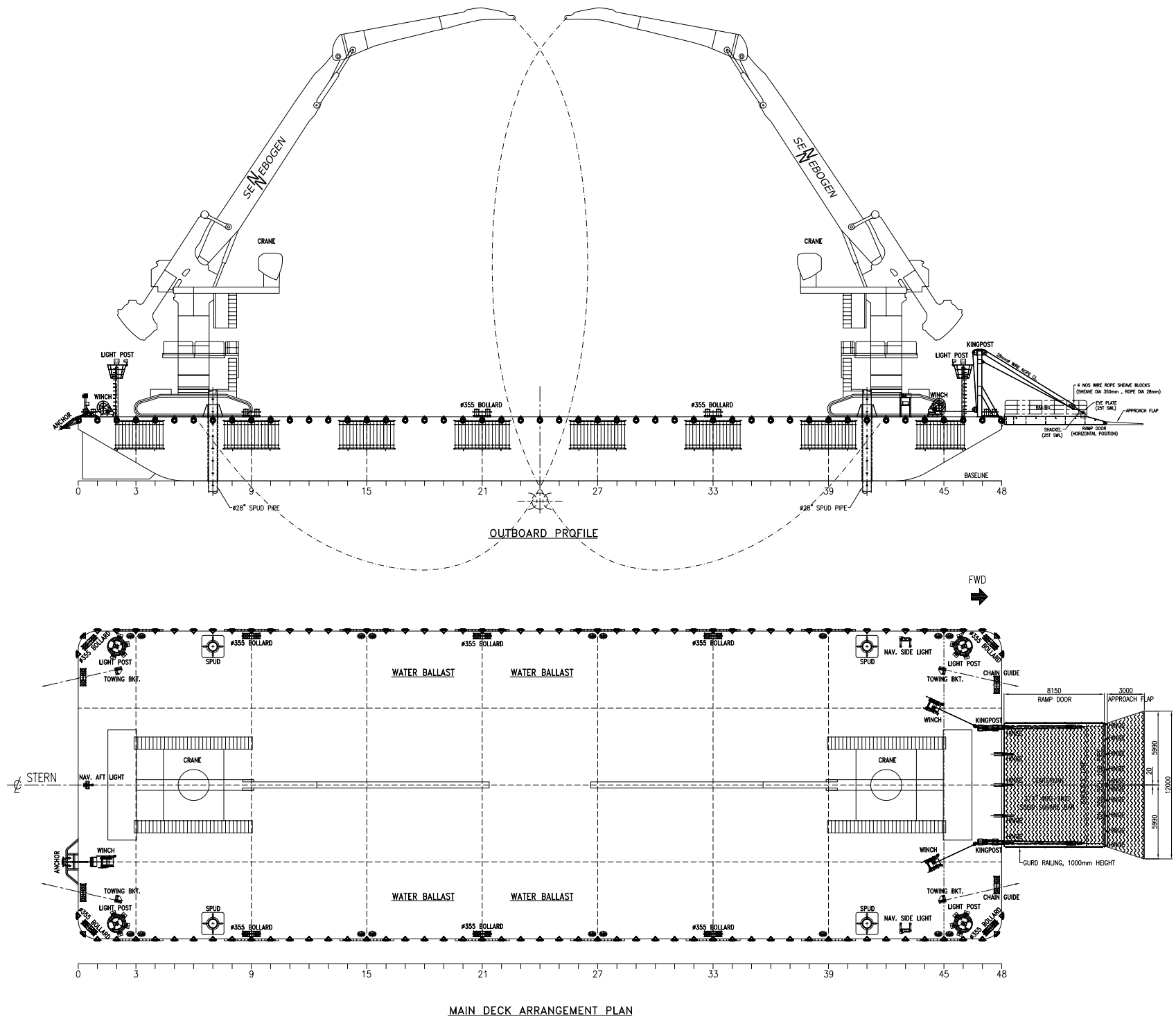
PRINCIPAL PARTICULARS

LENGTH (MLD) 45.00 M  
BREADTH (MLD) 25.00 M  
DEPTH (MLD) 2.50 M  
DECK LOAD: 15 T/ M<sup>2</sup>  
CLASS: ABS + A1 BARGE  
45 x 25 x 2.5m FIXED RAMP BARGE



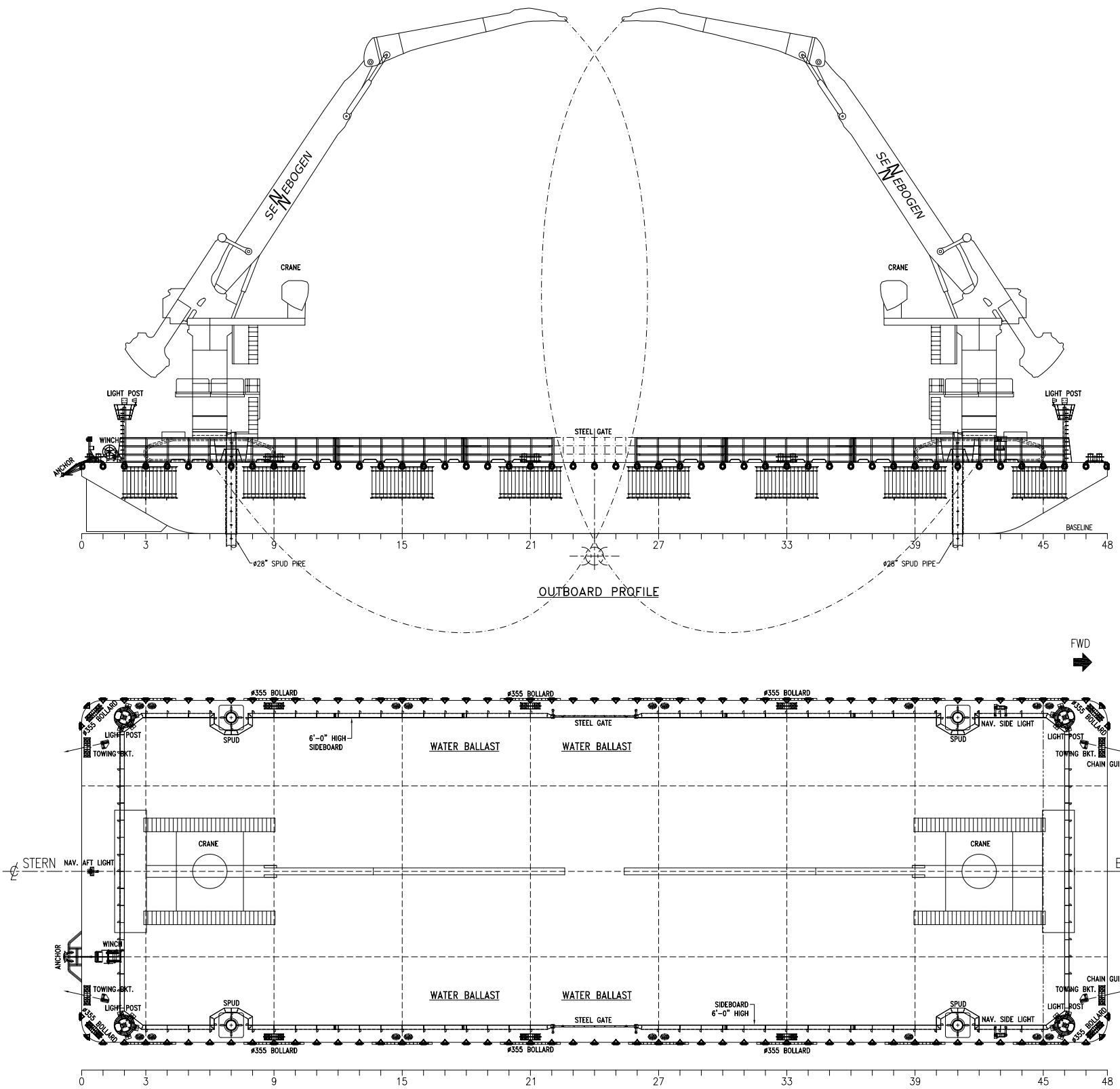
PRINCIPAL PARTICULARS

LENGTH (O.A) 65.00 M  
BREADTH (MLD) 24.00 M  
DEPTH (MLD) 4.50 M  
DRAFT (MLD) 3.630 M  
DECK LOAD: 15 T/ M<sup>2</sup>  
CLASS: ABS + A1 BARGE  
65 x 24 x 4.5m CRAWLER CRANE BARGE



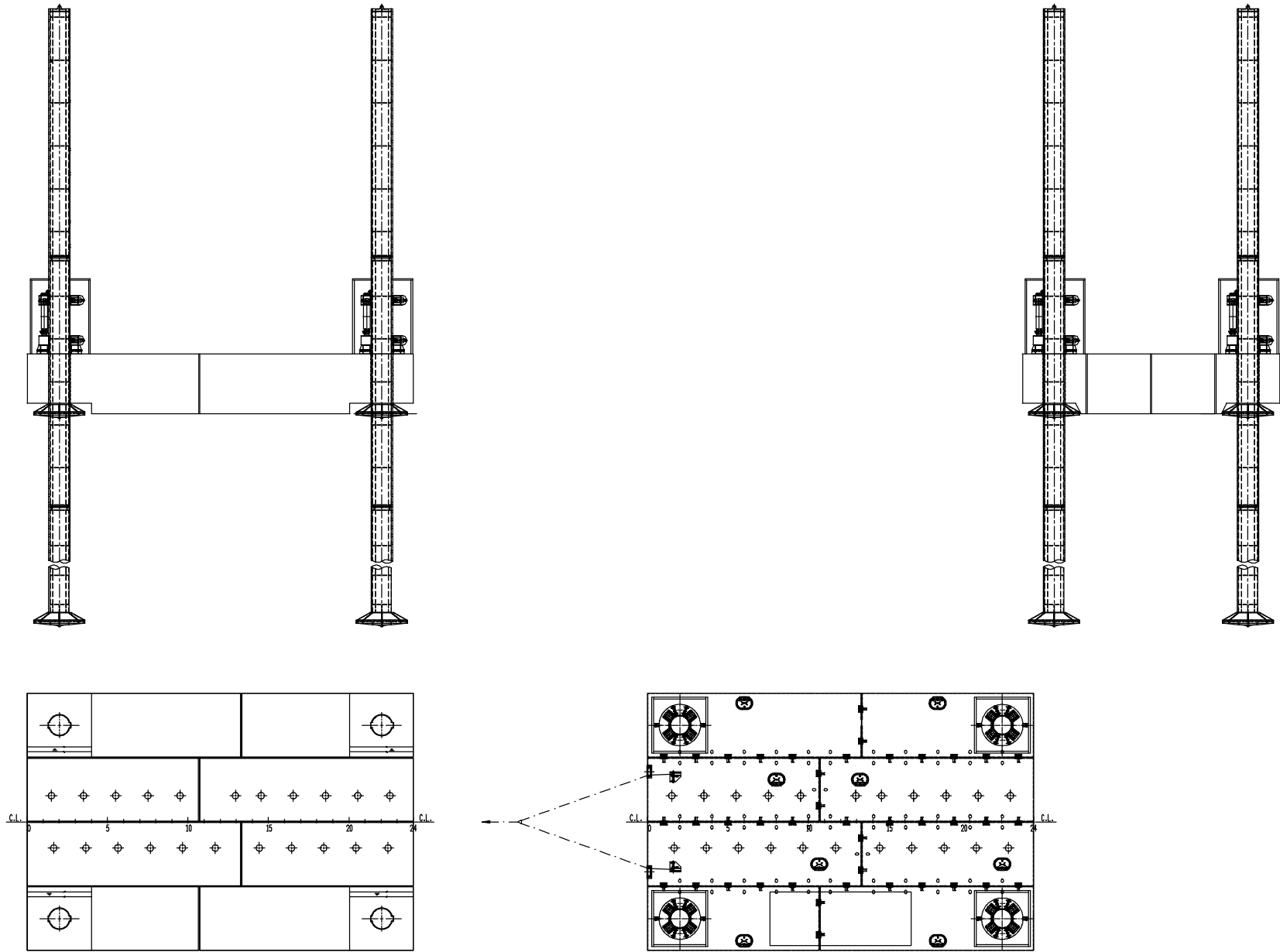
### PRINCIPAL PARTICULARS

LENGTH (O.A) 75.000 M  
BREADTH (MLD) 25.000 M  
DEPTH (MLD) 5.200 M  
DECK LOAD: 15 T/ M<sup>2</sup> UDL  
CLASS: ABS + A1 BARGE  
75 x 25 x 5.2m CRAWLER CRANE BARGE  
(WITH RAMP & CRAW CRANE)



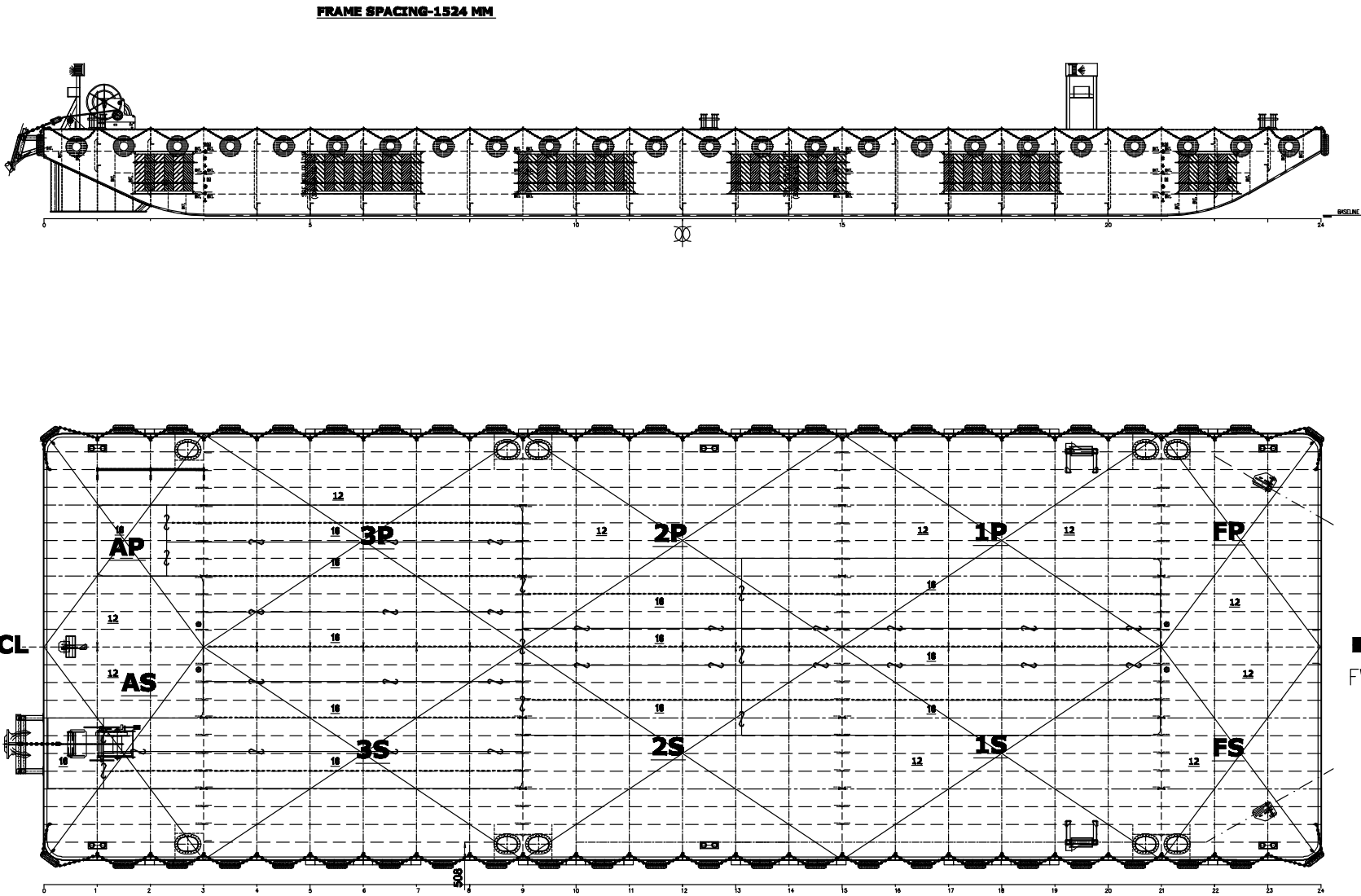
### PRINCIPAL PARTICULARS

LENGTH (O.A) 75.000 M  
BREADTH (MLD) 25.000 M  
DEPTH (MLD) 5.200 M  
DECK LOAD: 15 T/ M<sup>2</sup> UDL  
CLASS: ABS + A1 BARGE  
75 x 25 x 5.2m SPUD BARGE  
(WITH SIDE BOARD & c.e.) &  
CRAWLER CARNE BARGE



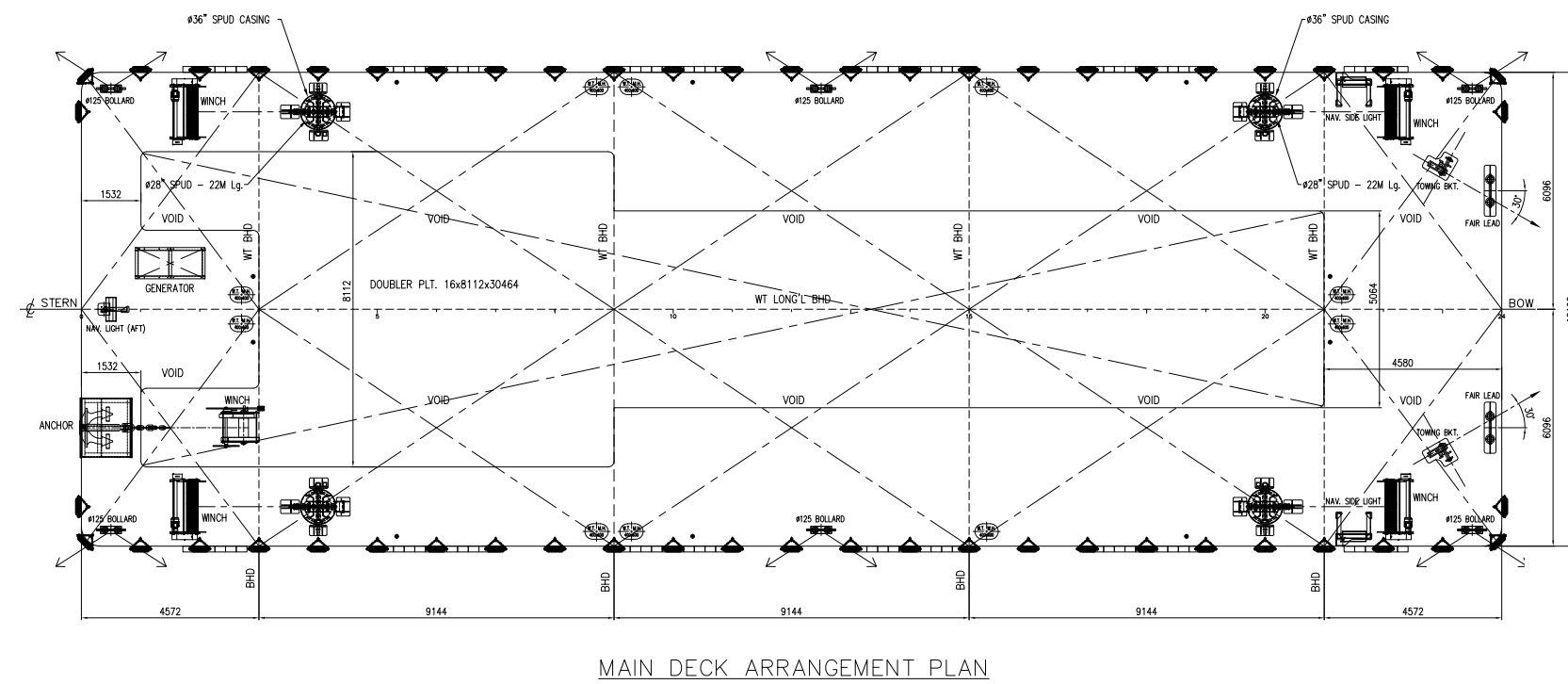
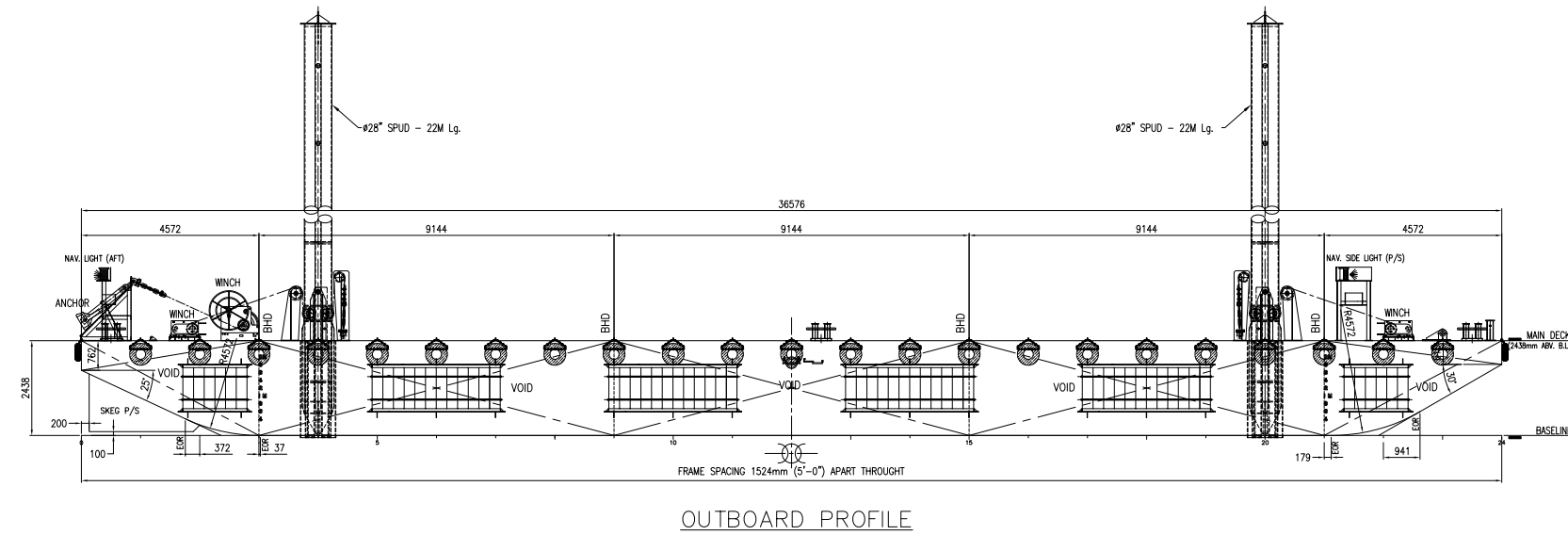
PRINCIPAL PARTICULARS

LENGTH (MLD) 24.00 M  
BREADTH (MLD) 17.00 M  
DEPTH (MLD) 2.60 M  
DECK LOAD: 5 T/ M²  
CLASS: ABS + A1 BARGE  
24 x 17 x 2.6m JACKUP BARGE



PRINCIPAL PARTICULARS

LENGTH (MLD) 36.576 M (120.0 FT)  
BREADTH (MLD) 12.192 M (40.0 FT)  
DEPTH (MLD) 2.438 M (8.0 FT)  
DECK LOAD: 10 T/ M²  
CLASS: ABS + A1 BARGE  
120' x 40' x 8' DECK CARGO BARGE



## PRINCIPAL PARTICULARS

LENGTH (MLD) 36.576 M (120.0 FT)

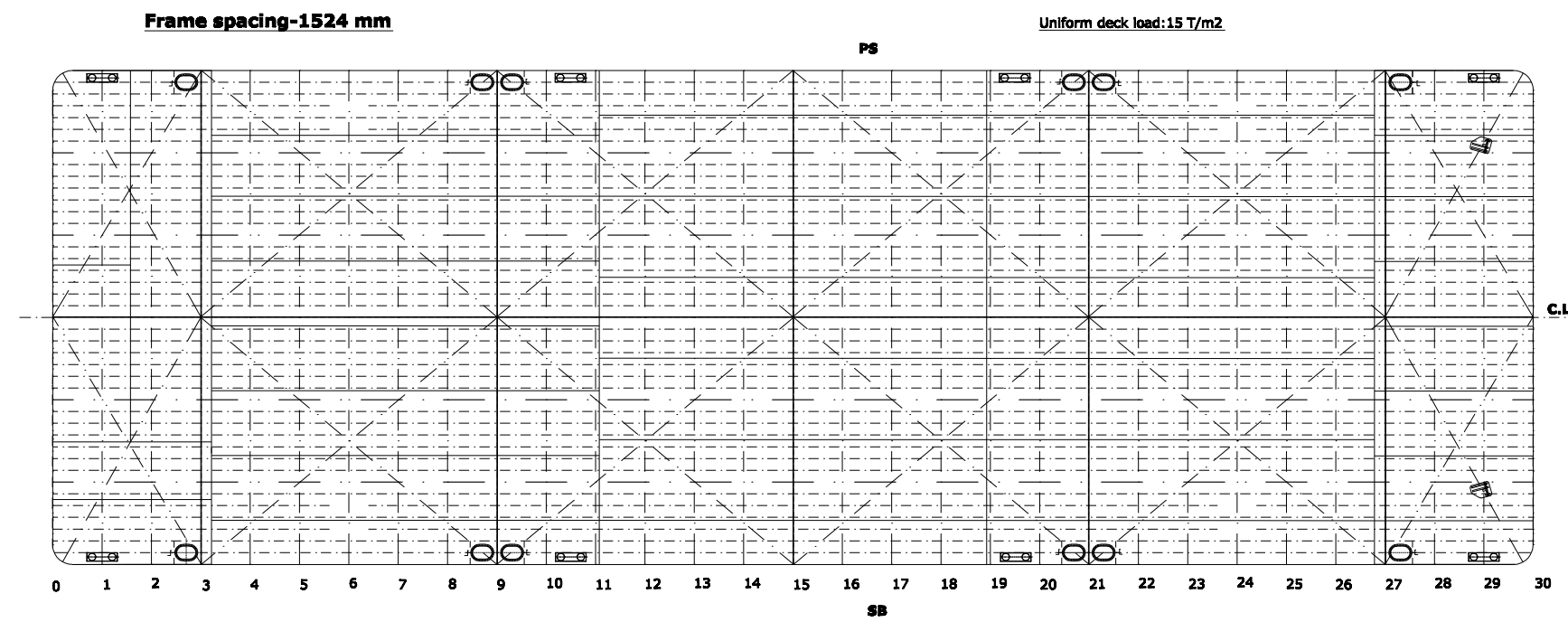
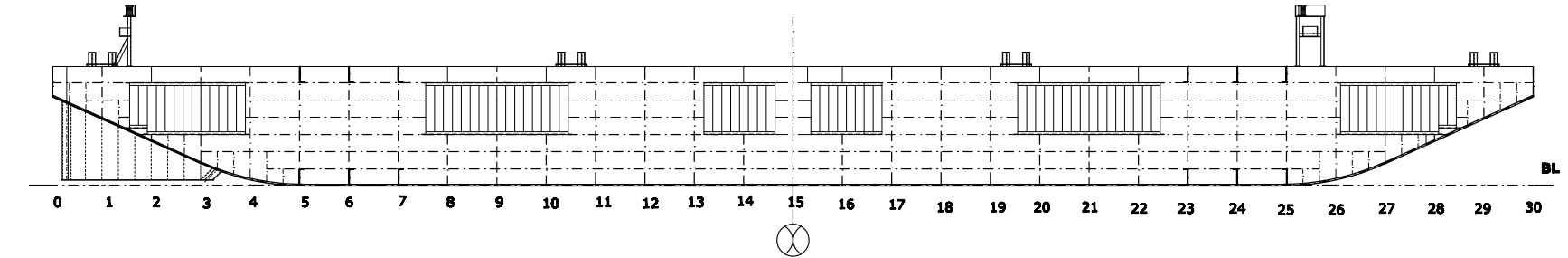
BREADTH (MLD) 12.192 M (40.0 FT)

DEPTH (MLD) 2.438 M (8.0 FT)

DECK LOAD: 10 T/ M<sup>2</sup>

CLASS: ABS + A1 BARGE

## 120' x 40' x 8' DECK CARGO BARGE WITH SPUDS



## PRINCIPAL PARTICULARS

LENGTH (MLD) 45.720 M (150.0 FT)

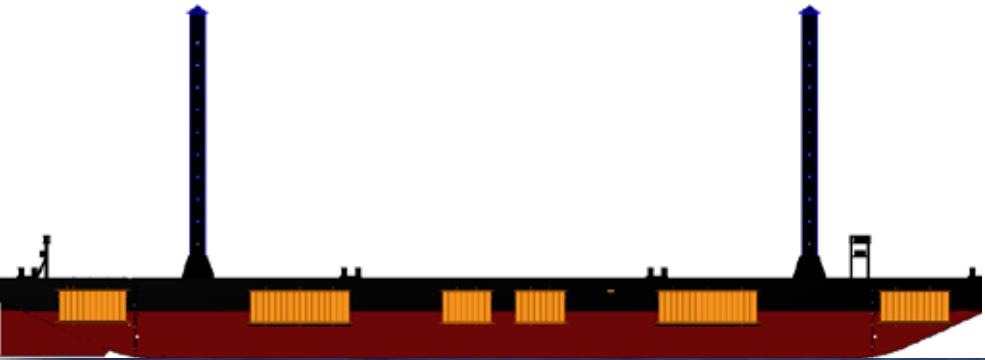
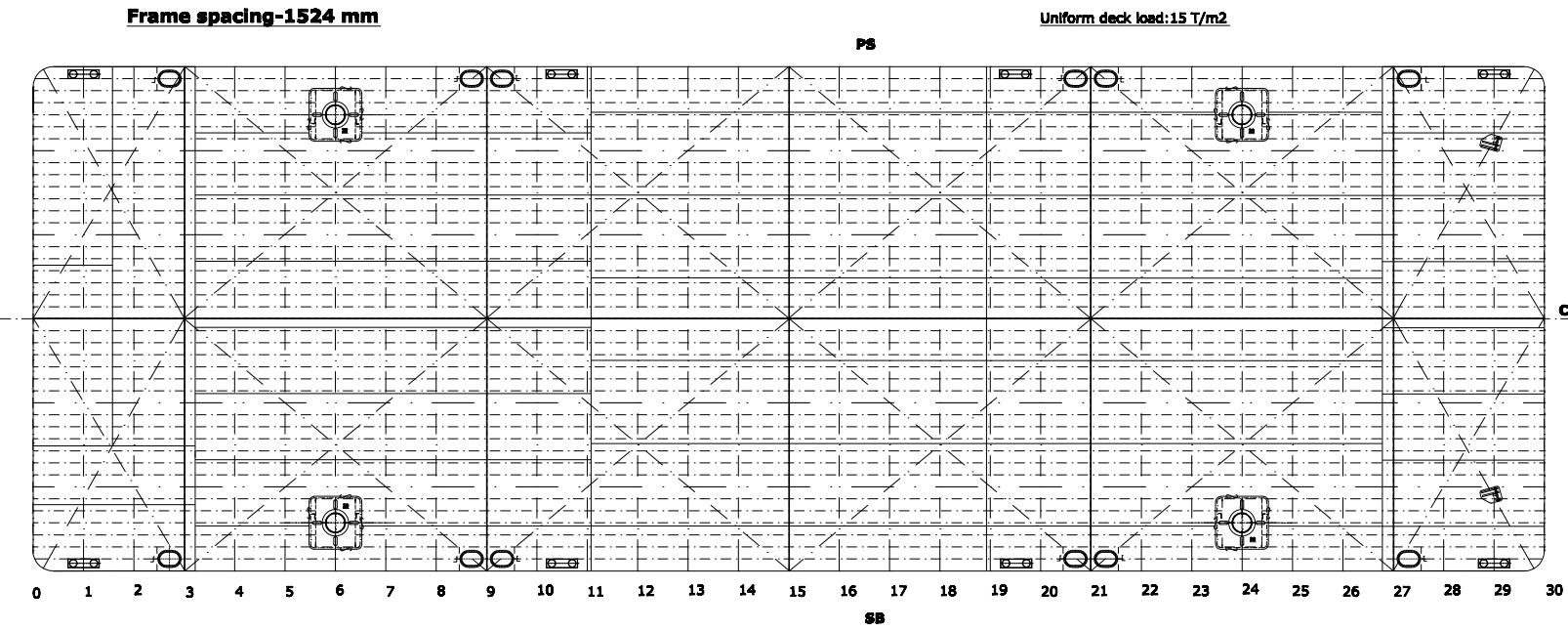
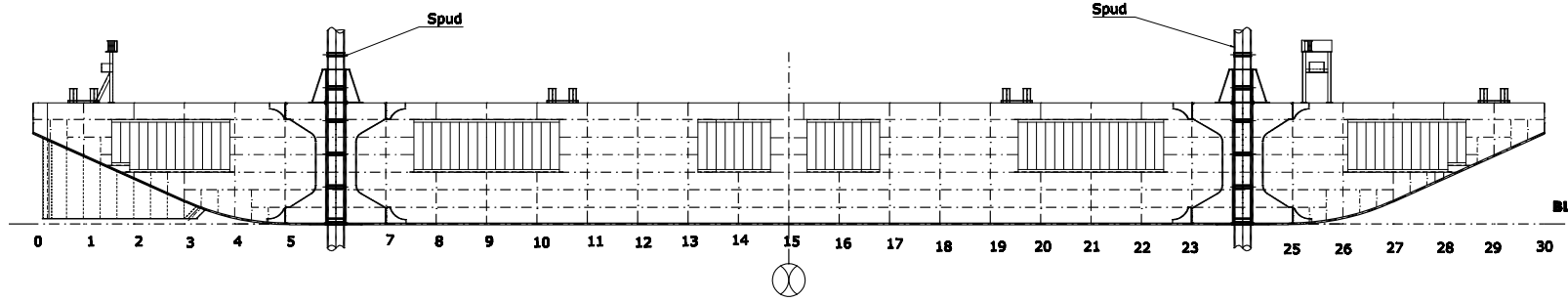
BREADTH (MLD) 15.240 M (50.0 FT)

DEPTH (MLD) 3.657 M (12.0 FT)

DECK LOAD: 15 T/ M<sup>2</sup>

CLASS: ABS + A1 BARGE

### 150' x 50' x 12' DECK CARGO BARGE WITHOUT SPUDS



**PRINCIPAL PARTICULARS**

LENGTH (MLD) 45.720 M (150.0 FT)

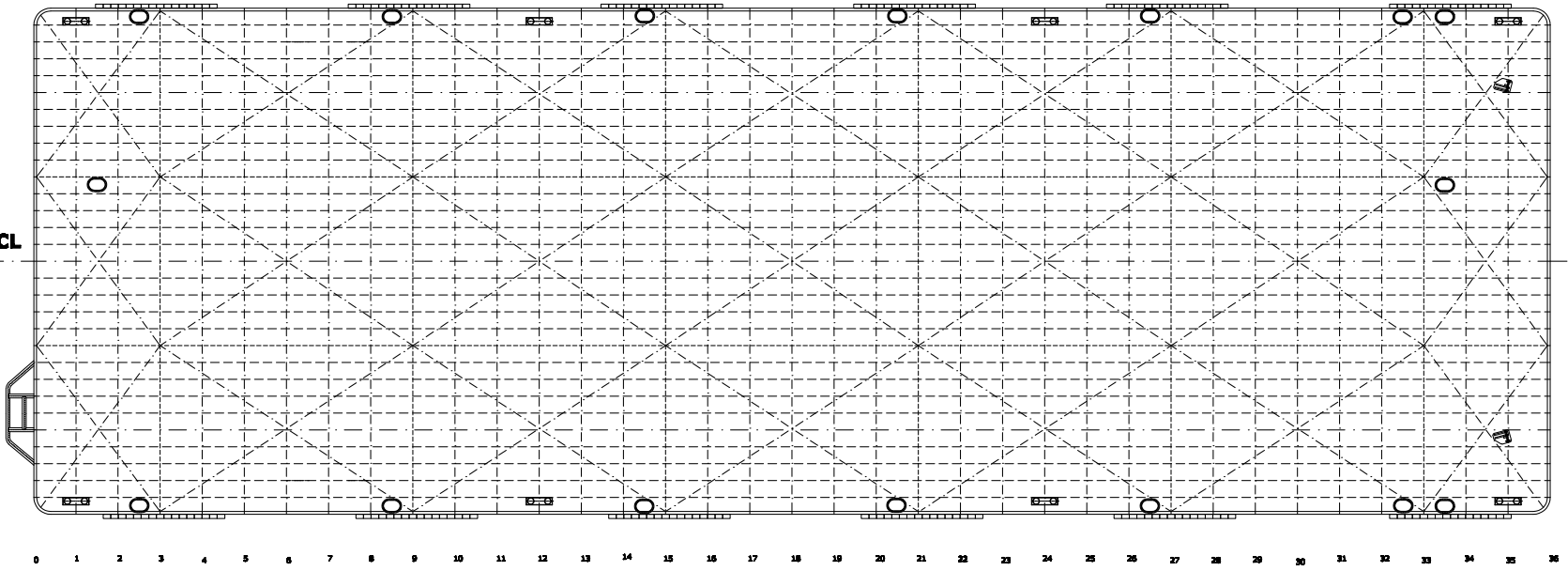
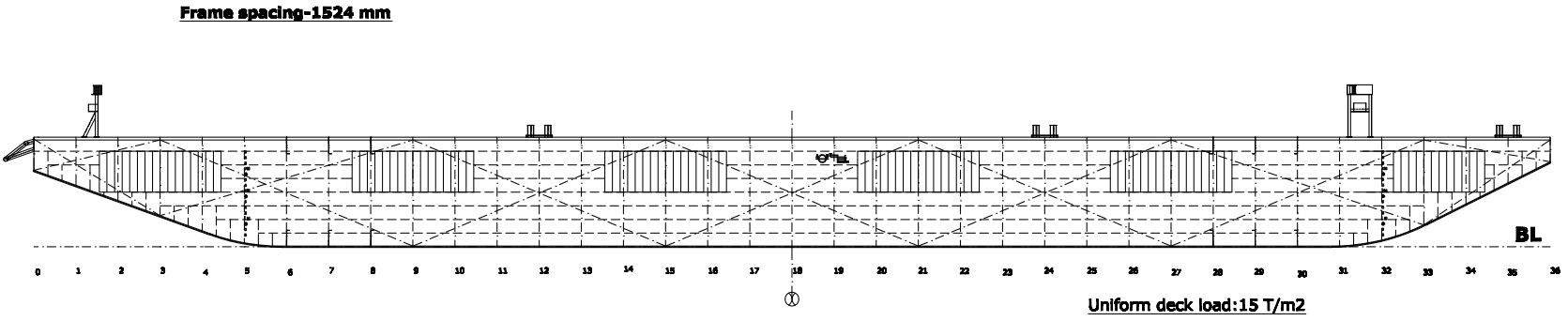
BREADTH (MLD) 15.240 M (50.0 FT)

DEPTH (MLD) 3.657 M (12.0 FT)

DECK LOAD: 15 T/ M<sup>2</sup>

CLASS: ABS + A1 BARGE

150' × 50' × 12' DECK CARGO BARGE WITH SPUD



**PRINCIPAL PARTICULARS**

LENGTH (MLD) 54.864 M (180.0 FT)

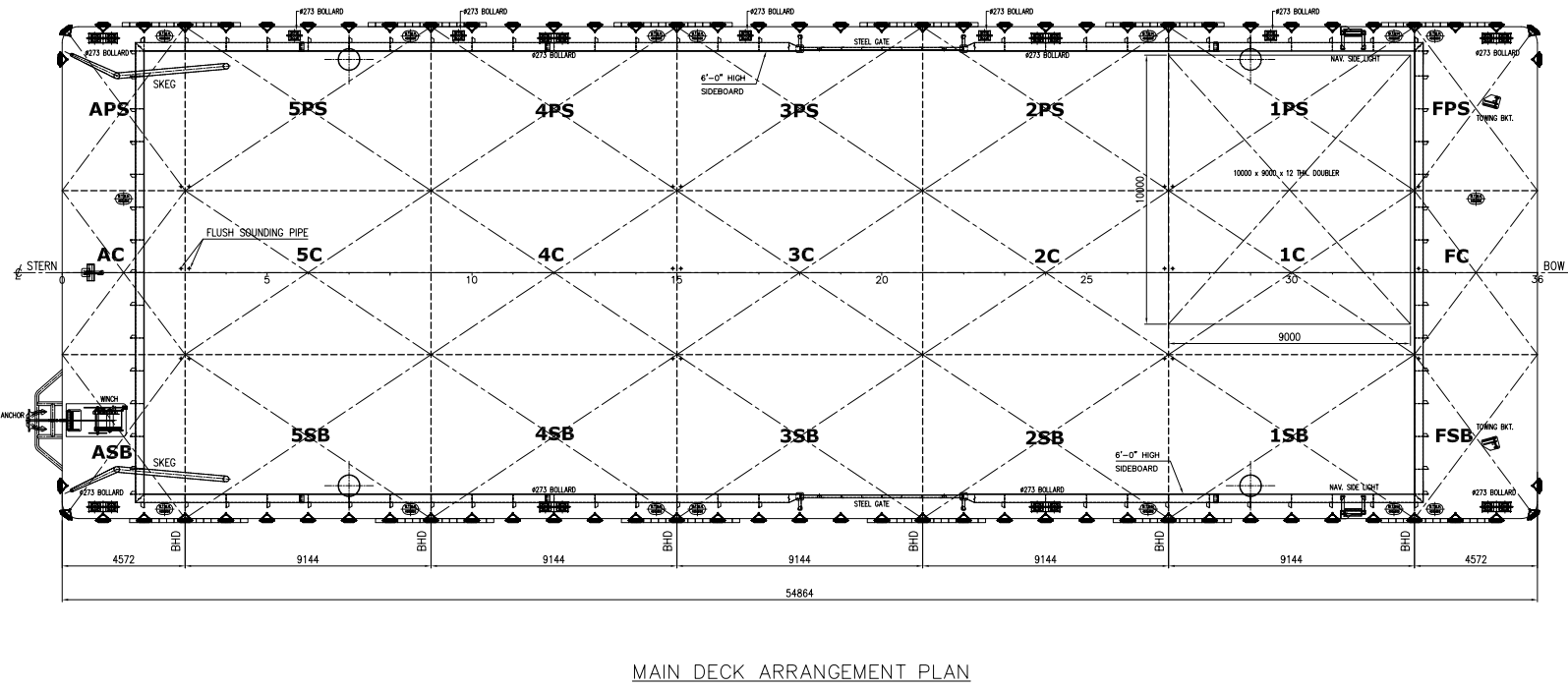
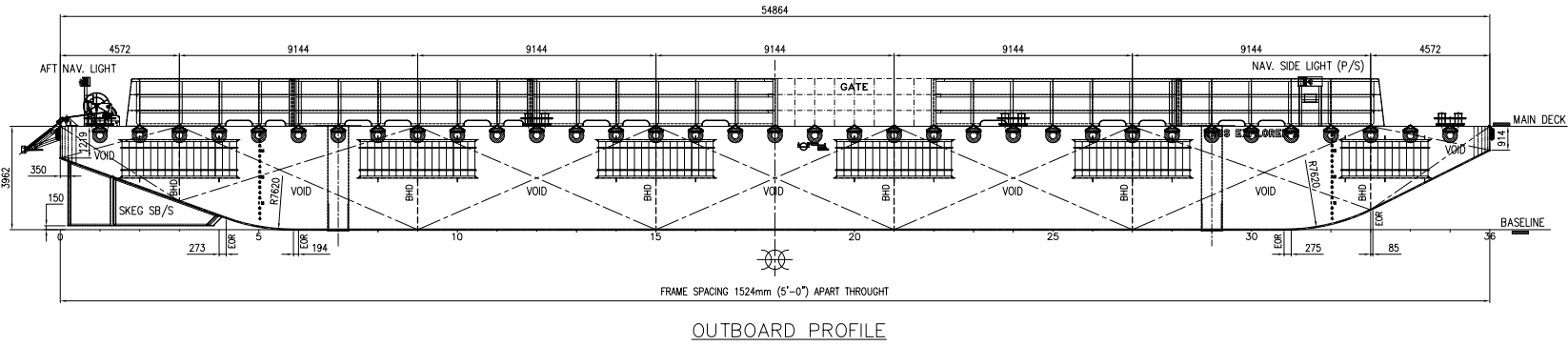
BREADTH (MLD) 18.288 M (60.0 FT)

DEPTH (MLD) 3.962 M (13.0 FT)

DECK LOAD: 15 T/ M<sup>2</sup>

CLASS: ABS + A1 BARGE

180' × 60' × 13' DECK CARGO BARGE



PRINCIPAL PARTICULARS

LENGTH (MLD) 54.864 M (180.0 FT)

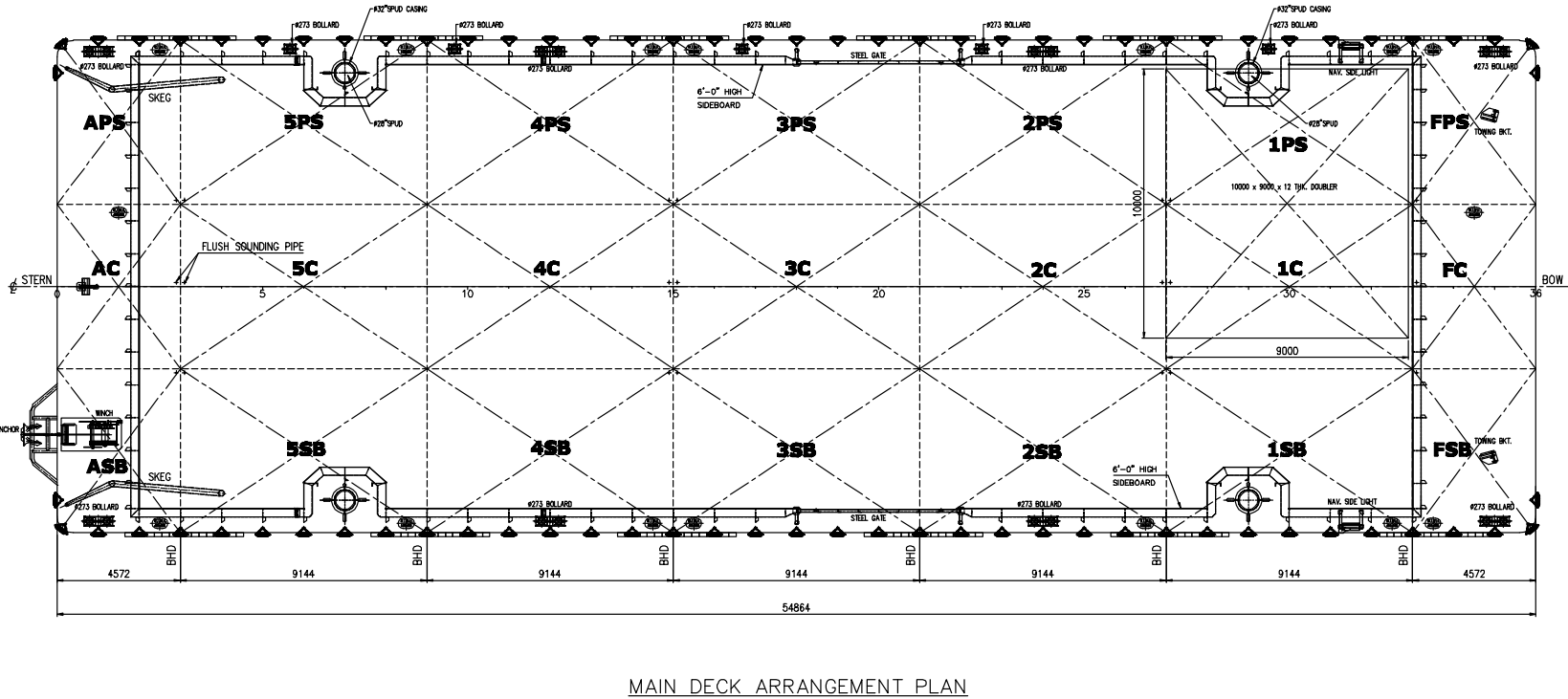
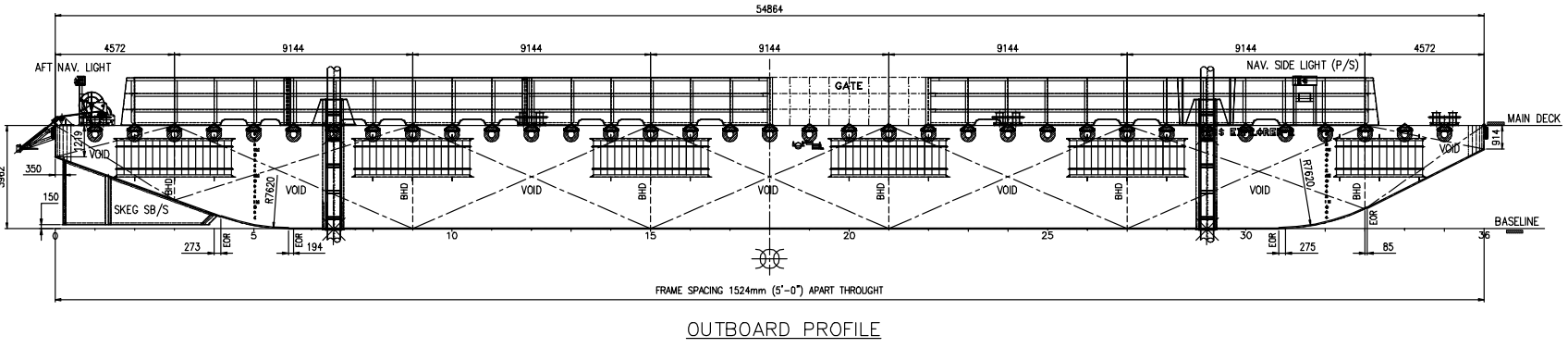
BREADTH (MLD) 18.288 M (60.0 FT)

DEPTH (MLD) 3.962 M (13.0 FT)

DECK LOAD: 15 T/ M<sup>2</sup>

CLASS: ABS + A1 BARGE

180' × 60' × 13' DECK CARGO BARGE WITH SIDEBOARD



PRINCIPAL PARTICULARS

LENGTH (MLD) 54.864 M (180.0 FT)

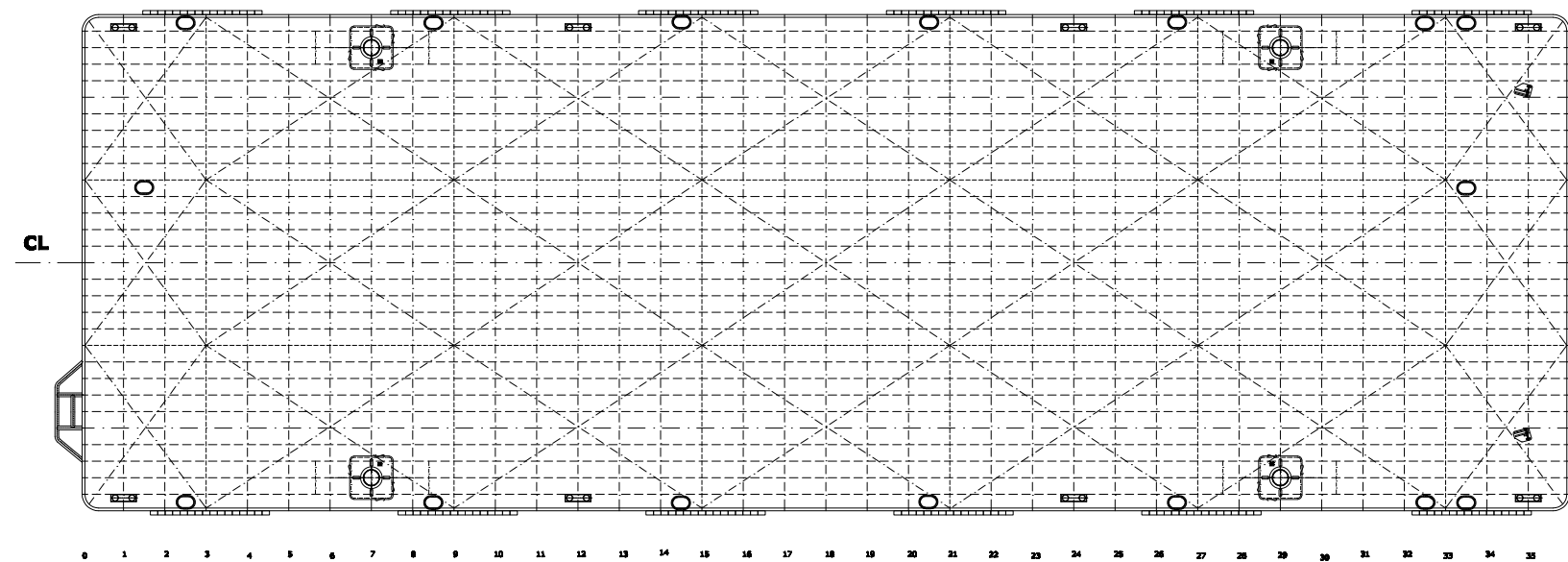
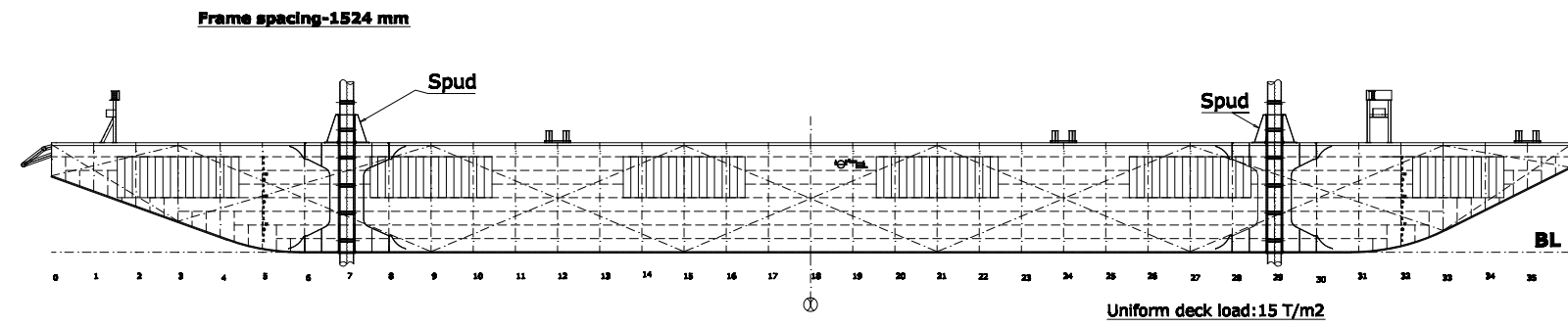
BREADTH (MLD) 18.288 M (60.0 FT)

DEPTH (MLD) 3.962 M (13.0 FT)

DECK LOAD: 15 T/ M<sup>2</sup>

CLASS: ABS + A1 BARGE

180' × 60' × 13' DECK CARGO BARGE WITH  
SIDEBOARD AND SPUDS



## PRINCIPAL PARTICULARS

LENGTH (MLD) 54.864 M (180.0 FT)

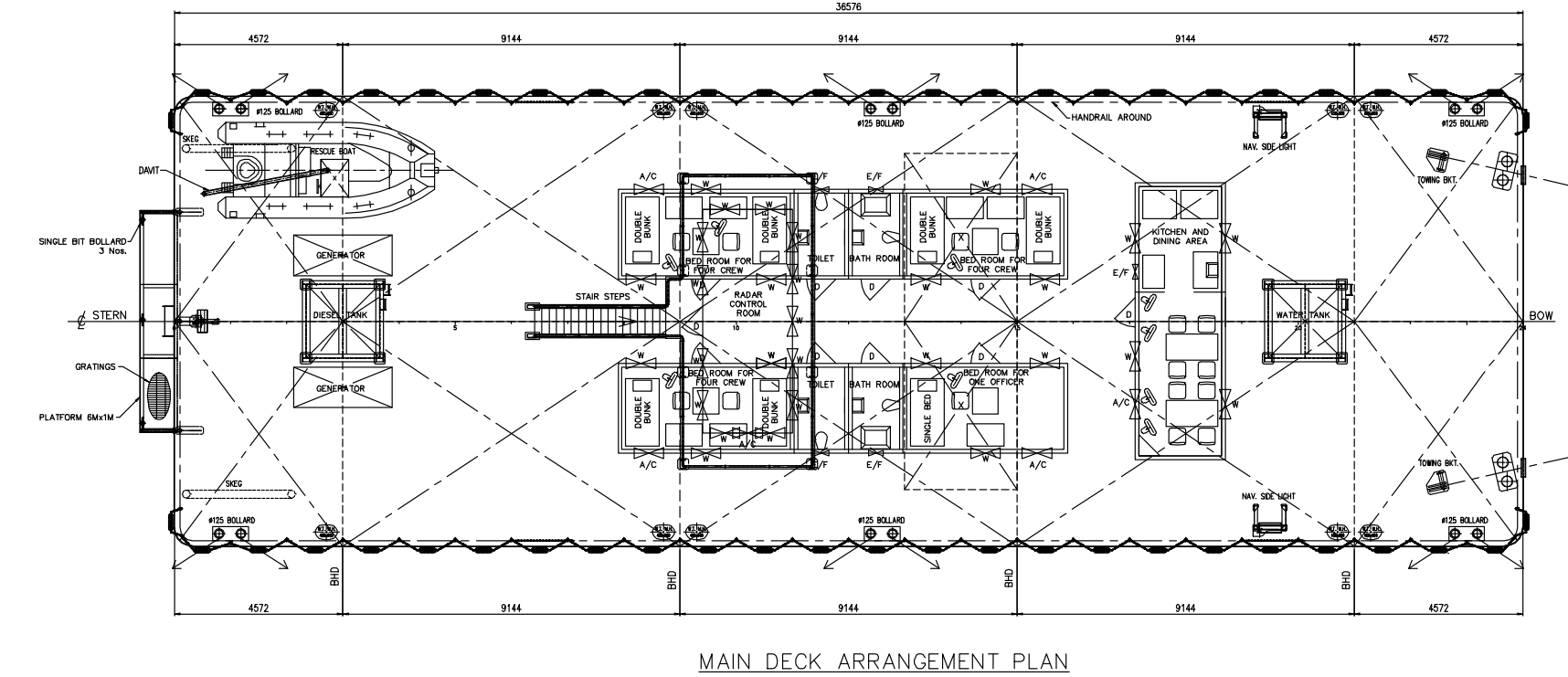
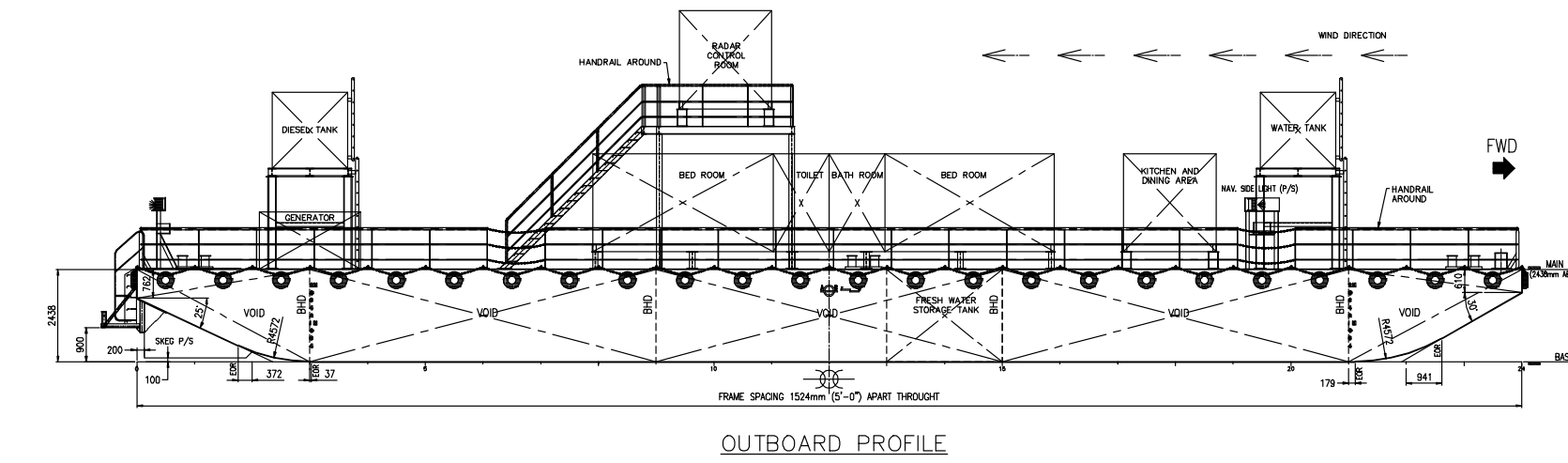
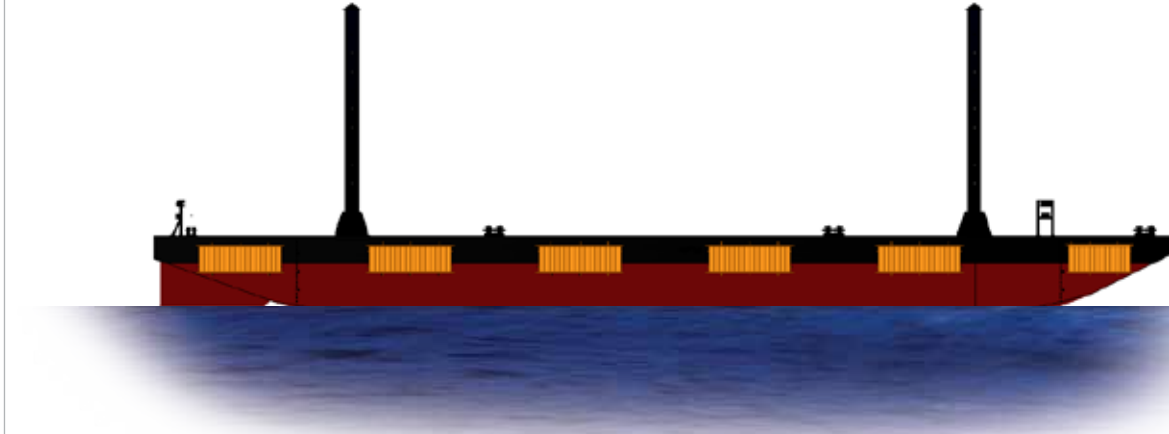
BREADTH (MLD) 18.288 M (60.0 FT)

DEPTH (MLD) 3.962 M (13.0 FT)

DECK LOAD: 15 T/ M<sup>2</sup>

CLASS: ABS + A1 BARGE

## 180' x 60' x 13' DECK CARGO BARGE WITH SPUDS



## PRINCIPAL PARTICULARS

LENGTH (MLD) 36.576 M (120.0 FT)

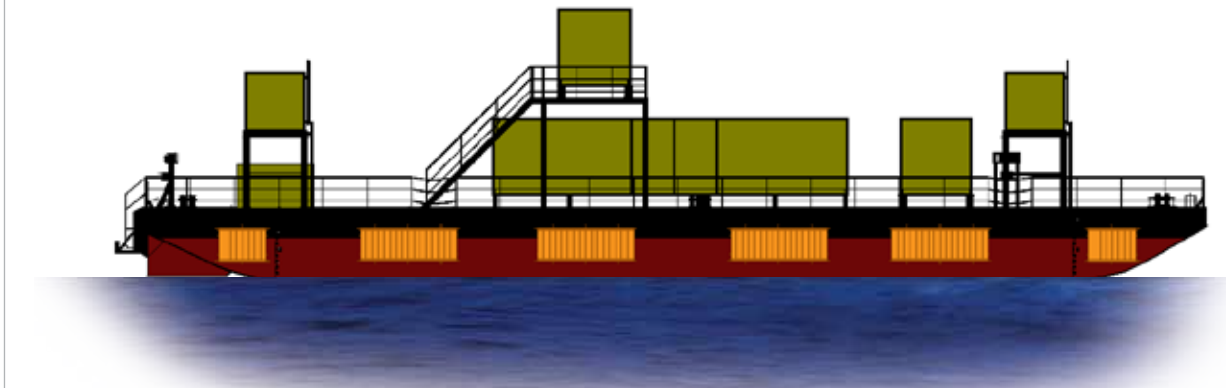
BREADTH (MLD) 12.192 M (40.0 FT)

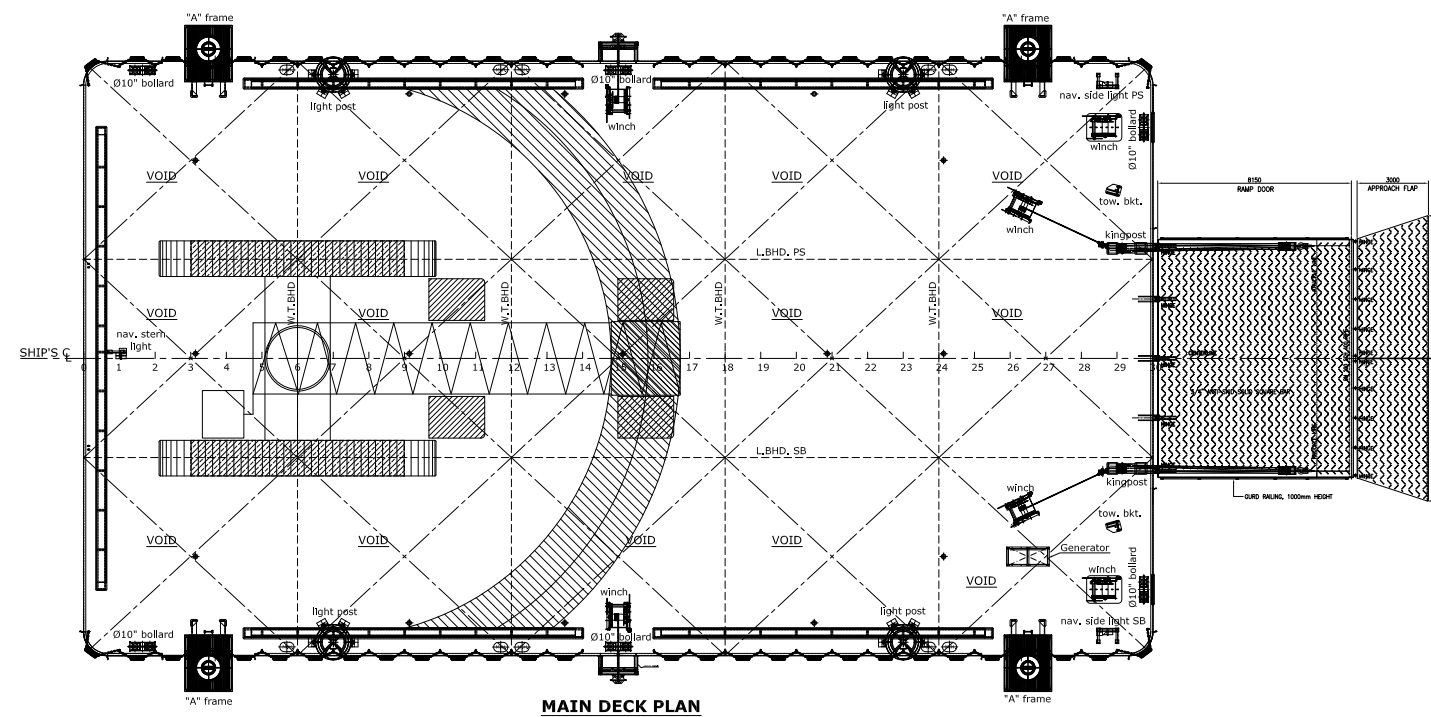
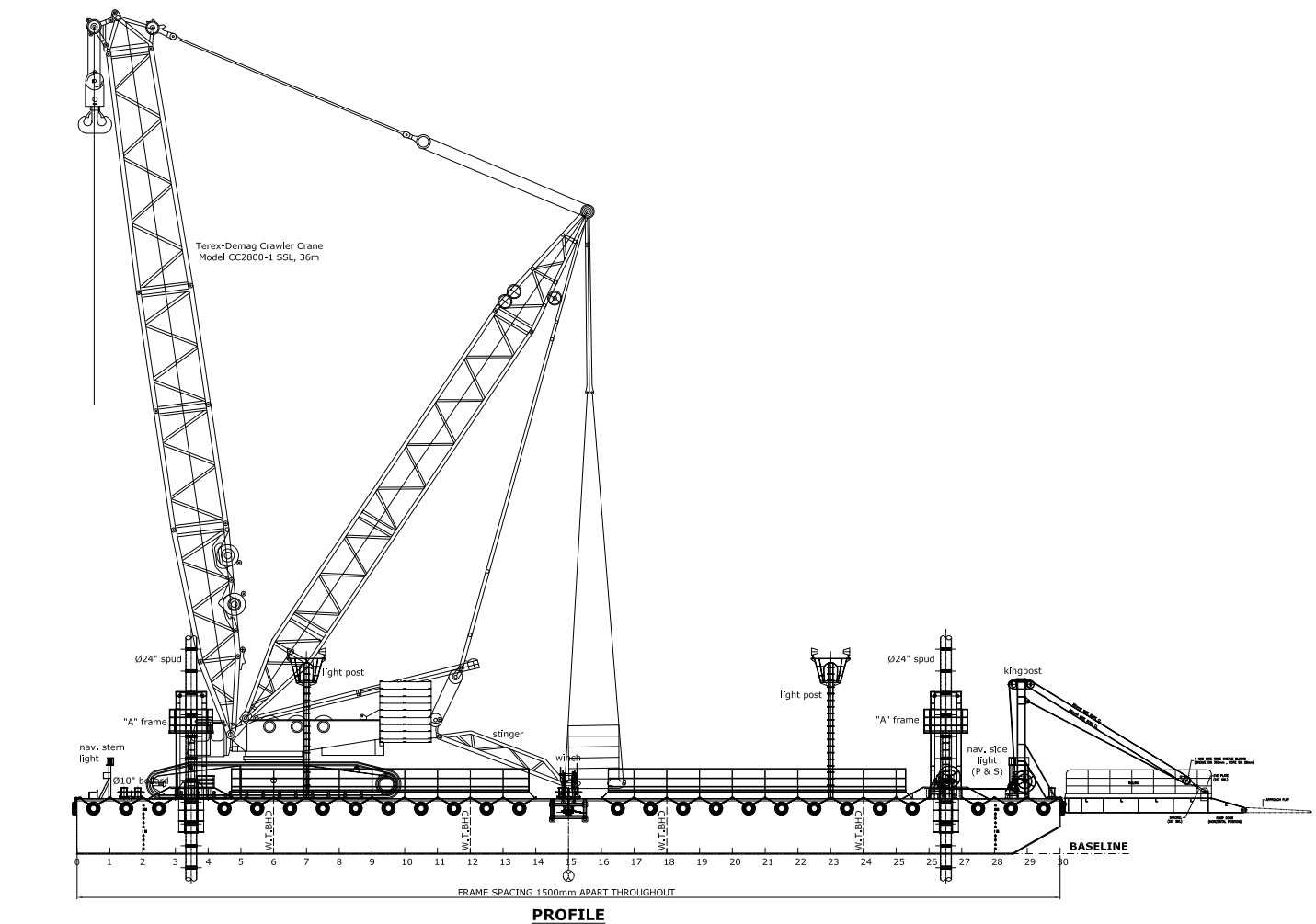
DEPTH (MLD) 2.438 M (8.0 FT)

DECK LOAD: 10 T/ M<sup>2</sup>

CLASS: ABS + A1 BARGE

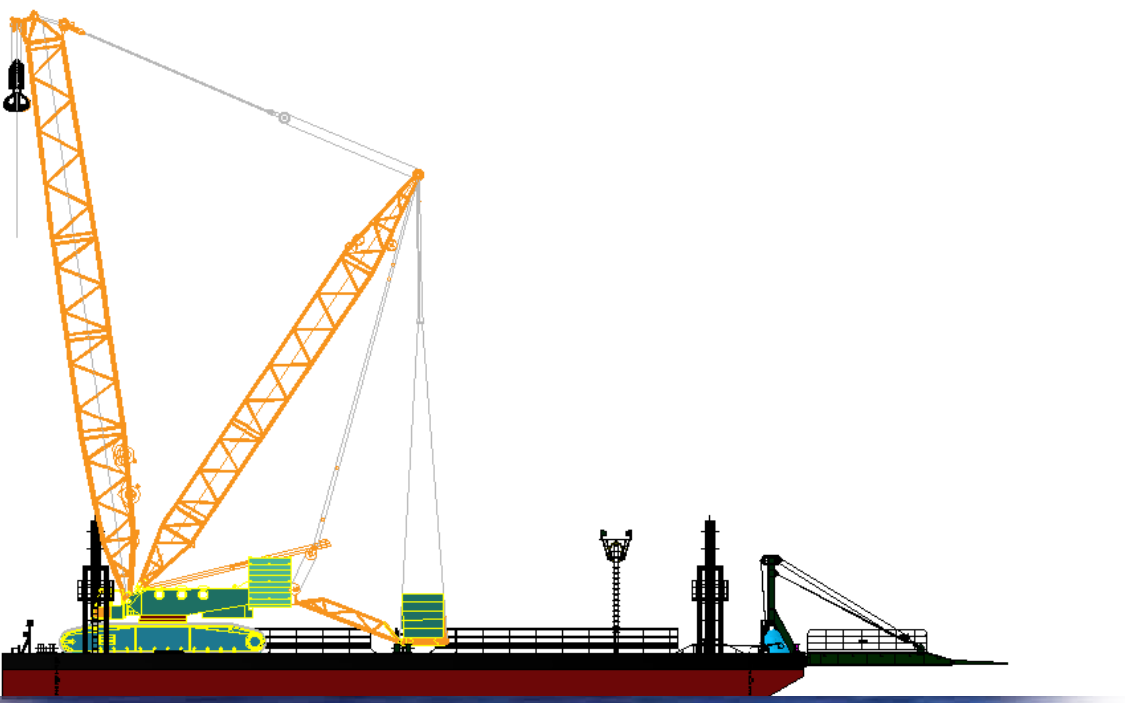
120' x 40' x 8' DECK CARGO BARGE  
(ACCOMMODATION)



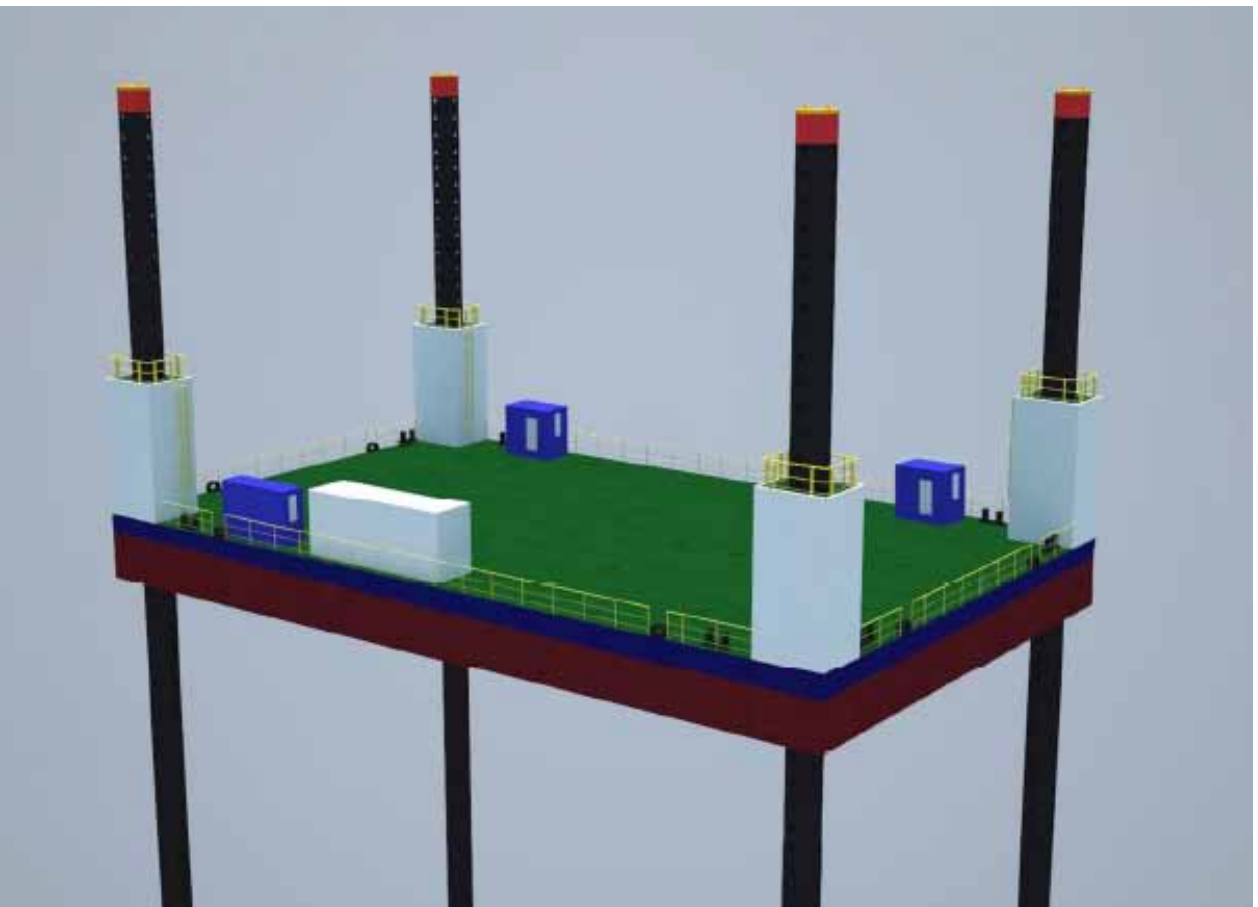
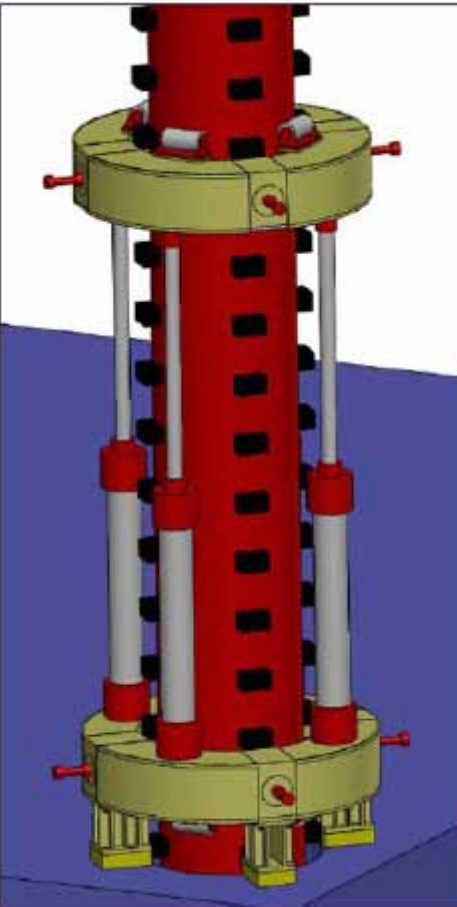


### PRINCIPAL PARTICULARS

LENGTH (MLD) 45.00 M  
BREADTH (MLD) 25.00 M  
DEPTH (MLD) 2.50 M  
DECK LOAD: 15 T/ M<sup>2</sup>  
CLASS: ABS + A1 BARGE  
45 x 25 x 2.5m CRAWLER CRANE BARGE



### JACKUP BARGE



شركة ناس للخدمات البحرية ذ.م.م.  
NASS MARINE SERVICES CO W.L.L.

P.O. Box 669, Manama, Kingdom of Bahrain  
Tel: +973 17 467722, Fax: +973 17 467773  
[www.nassgroup.com](http://www.nassgroup.com)

Total Marine Solutions